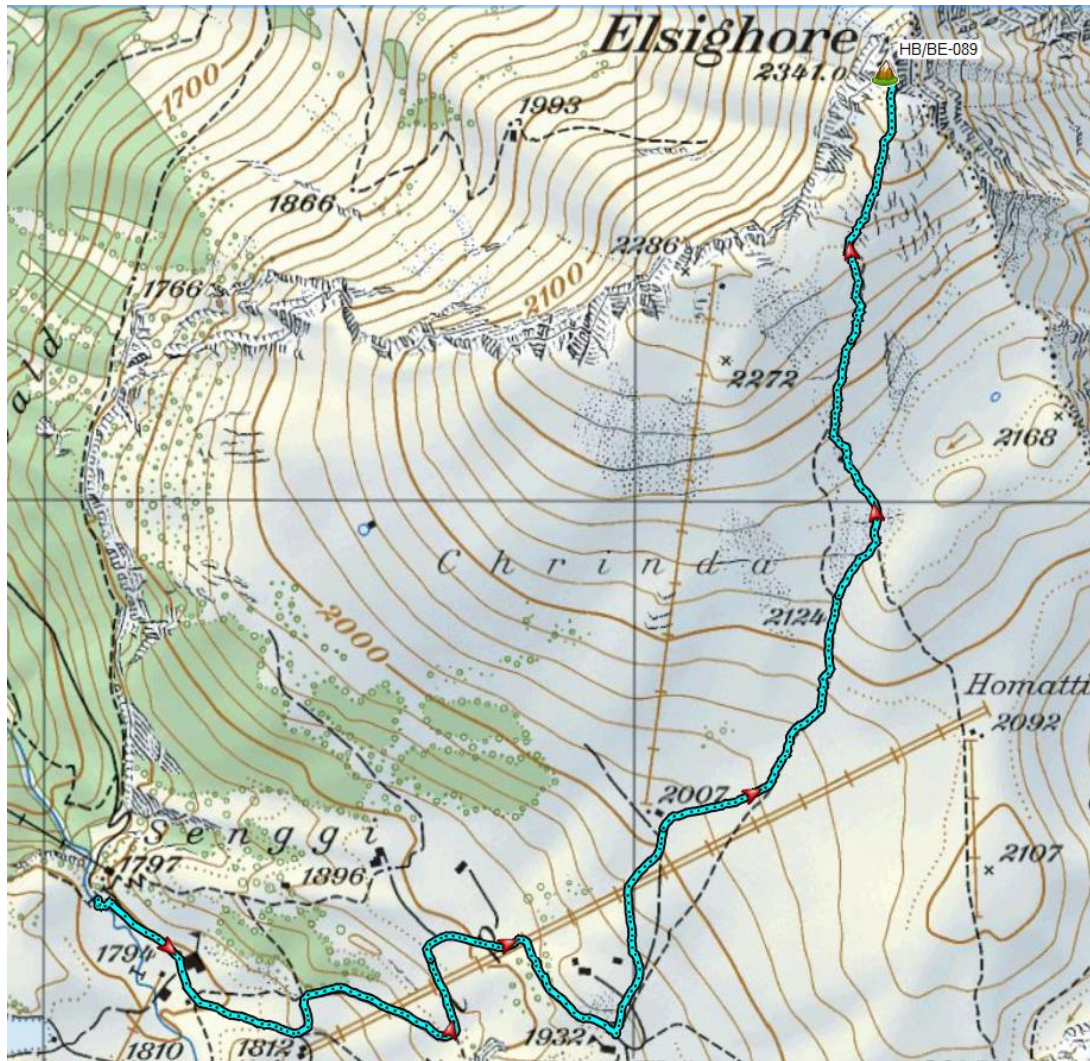


BE-089 Elsihorn / Elsihore

Paul HB9DST, September 9, 2015

A pleasant, only moderately difficult (T2) hike in an area somewhat off the beaten path. The hike itself is not terribly spectacular, but the views on the summit are quite nice.



I'm trying to enjoy the late summer weather to get in some peaks that will shortly be inaccessible due to snow. Already you can feel autumn in the air. There isn't that much time left for high-altitude activations. So I chose BE-089 -- but I discovered that this can also be a snowshoe SOTA.



Parking lot at the gondola base station.

This hike starts at the Elsigbach gondola station, which has limited parking. Note for those taking public transportation: From the train station at Frutigen, you take two buses. The second of these (actually a mini-bus) has a very limited schedule and must be reserved in advance. I didn't know this, but because it was such a nice day there were other people making the same trip who did reserve the bus. The fare for this shuttle is CHF 10.00 round trip.



View when you get off the gondola at the summit station. On the left is a nice restaurant for a start-up coffee before the activation or a beer afterwards.

The gondola ride (CHF 14.00 round trip) takes about 10 minutes and goes to the top station at Senggi. From here you follow a paved road to Obere Elsig at Point 1932. Then you make a bee-line on easy trails up to the summit. About half-way up you can see a very large radar reflector (I think?) that is located just below the main summit.



At point 1932 you leave the paved road and start up a hiking trail leading to the summit.



I'm guessing this object is a radar reflector. It is quite large and you can see it starting at about halfway through the hike. The actual summit is just over the horizon, about 10 minutes away.



The actual summit, including the instrument tower to which I lashed my mast. There are no other convenient supports on the summit (no summit cross).

The entire 3.6 km hike up involved an ascent of 550 meters and took 90 minutes. It was all T2. In fact, on the summit (relatively crowded even on a weekday, partly because of the beautiful weather that day and partly because it is so relatively easy) I encountered my first blind mountain hiker. For antenna supports there is no summit cross but instead an instrument tower to which I attached my mast.

Although the hike up is not very spectacular, the views on the summit are. Note: This summit is also very suitable for snowshoe activations in winter.



View looking north towards Lake Thun. The valley on the left is the Entschligetal leading to Adelboden, the valley on the right is the Kandertal leading, of course, to Kandersteg.